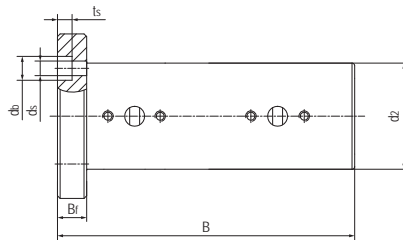
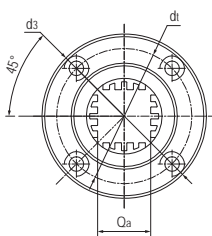


## LIN-12QRFL 加长型圆法兰直线轴承 Linear bearings with round flange, Long design



- 封闭式圆法兰加长设计
  - 装配2个LIN-12Q滑动膜
  - 阳极氧化铝合金适配器
  - 承受扭矩高达 10 Nm
  - 免维护、低噪音
  - 适用于污垢或灰尘环境
  - 使用温度 -50℃/+90℃
- Closed design with round flange
  - Assembled 2pcs liners LIN-12Q
  - Anodized aluminum adapter
  - Torque absorption up to 10 Nm
  - Maintenance-free and low noise
  - Resistance to dirt and dust
  - Operation temperature -50℃/+90℃

### 标准规格 Standard specifications



产品编码 Part No.:

LIN-12QRFL-20

内孔尺寸 Inner dimension

圆法兰加长型保持器  
Round flange aluminum adapter (long design)

LIN-12Q 标准滑动膜  
Standard liners LIN-12Q

轴 Shaft: h6-h9

产品编码 Part No.	$d_2$ [mm]	$B_f$ [mm]	$Q_a$ [mm]	$d_3$ [mm]	$d_1$ [mm]	$B$ [mm]	$d_s$ [mm]	$d_b$ [mm]	$t_s$ [mm]
LIN-12QRFL-20	40	11	20	62	51	112	5.5	9	5.5

产品编码 Part No.	内孔尺寸 Inner dimension [mm]	F max. [N] 最大动载荷 Dynamic Load P=5MPa	F max. [N] 最大静载荷 Static Load P=35MPa	最大扭矩 Max. torque [Nm]	重量 Weight [g]
LIN-12QRFL-20	20	3200	23000	10	231